

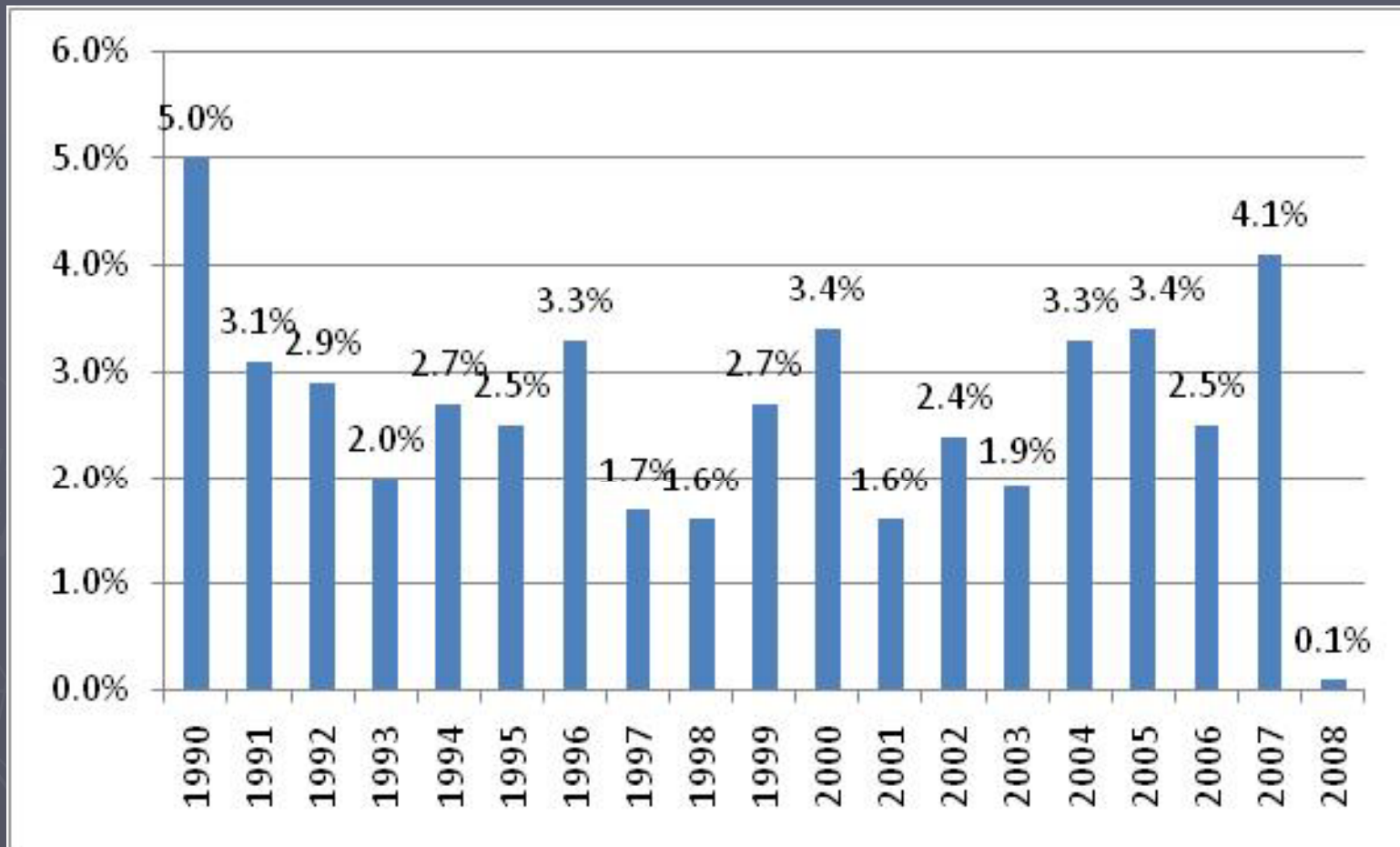
# 2009 Tentative Tax Levy

Glen Ellyn School District 41  
November 2, 2009

# Expected Increase

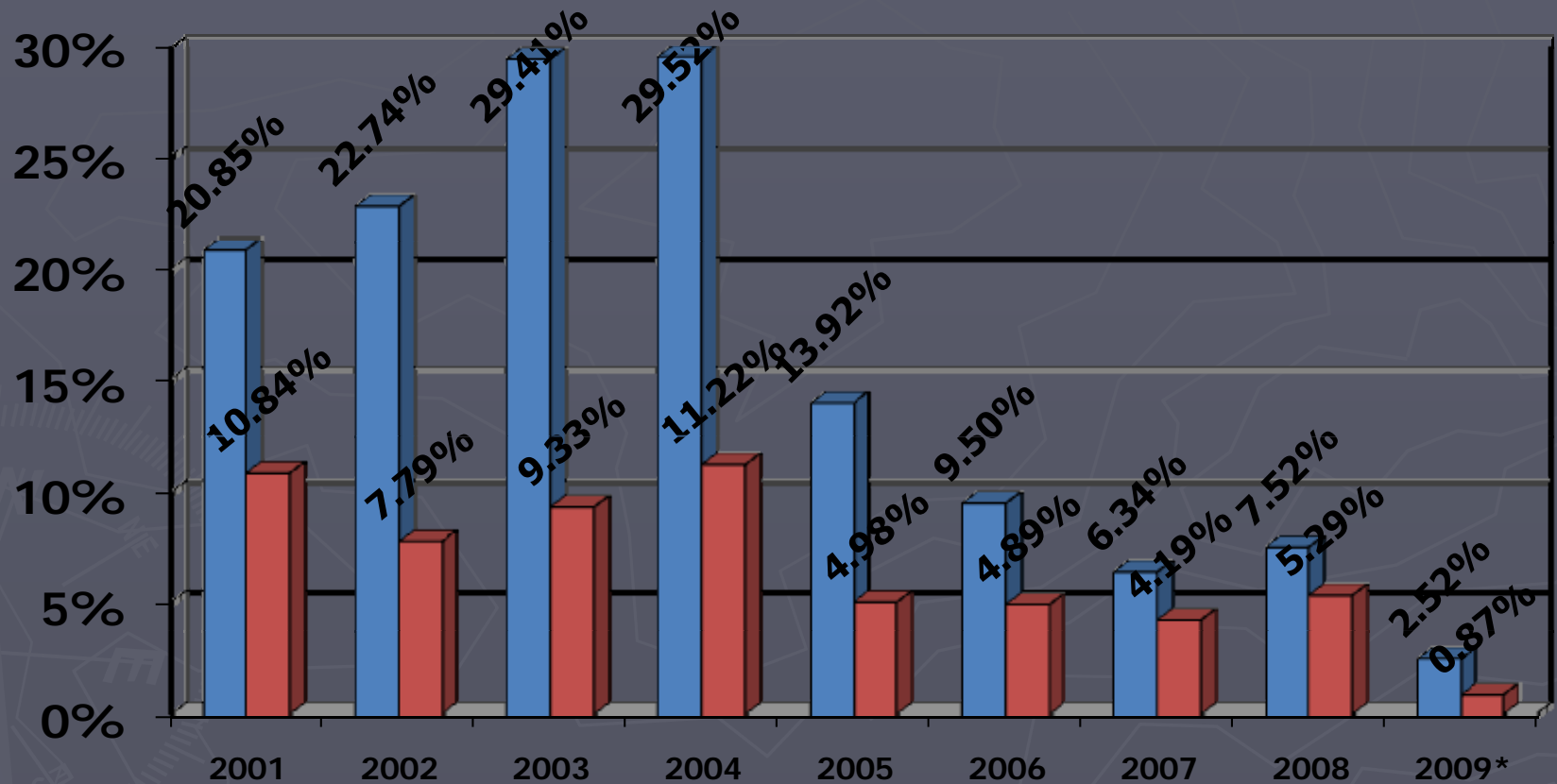
- ▶ The CPI for this tax levy is 0.1%.
- ▶ This levy request represents a 2.52% increase over last year's extension.
- ▶ This levy request allows the district to account for unforeseen circumstances that may affect final calculations.
- ▶ Based on the CPI, Estimated EAV and New Construction, we expect to see an overall increase of .87%.

# CPI History



# History of Past Levies

% Difference of Levy Requests Compared to Actual Extensions

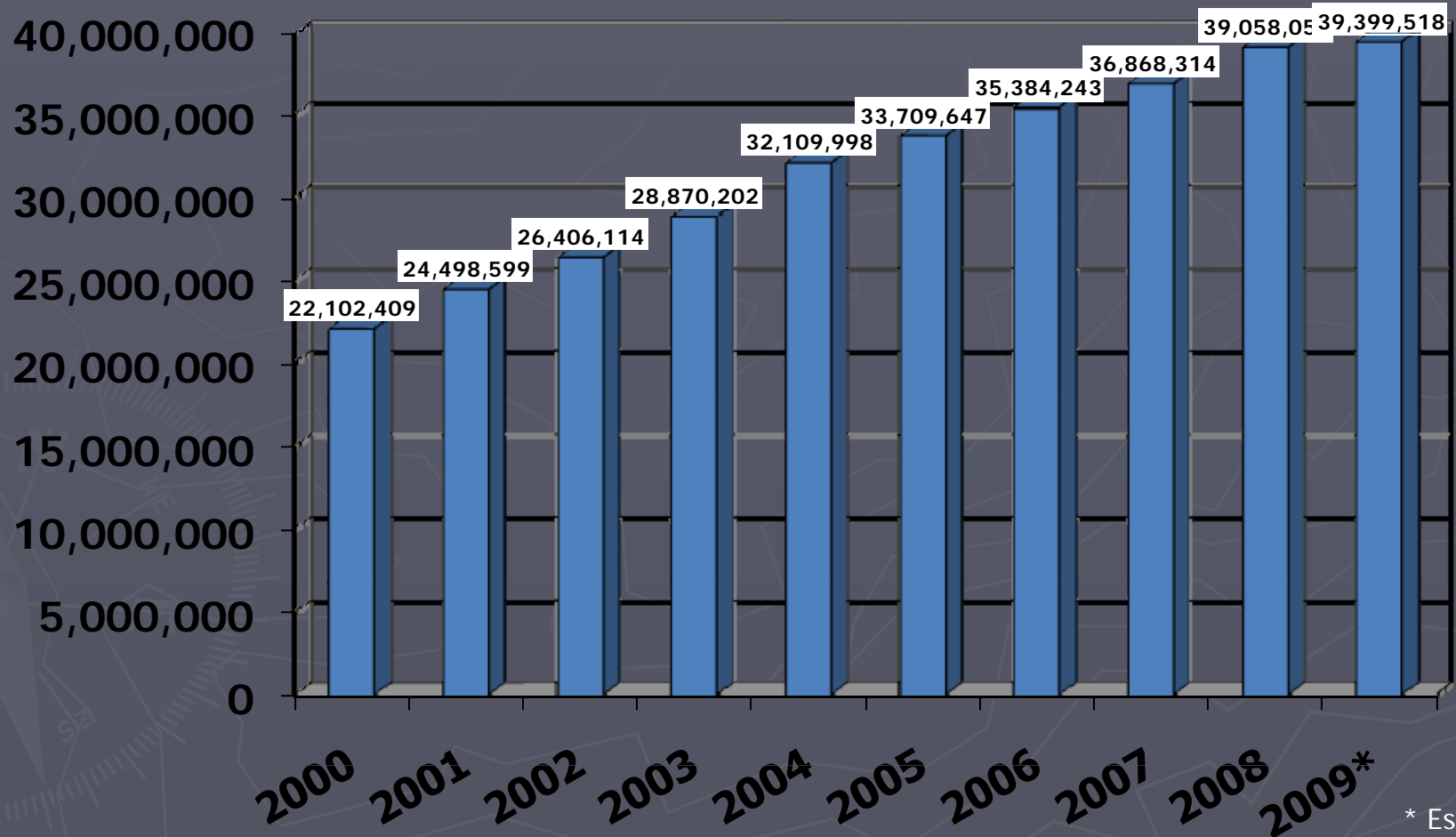


■ Levy Request compared to Prior Year Extension

■ Actual Compared to Prior Year Extension Amount

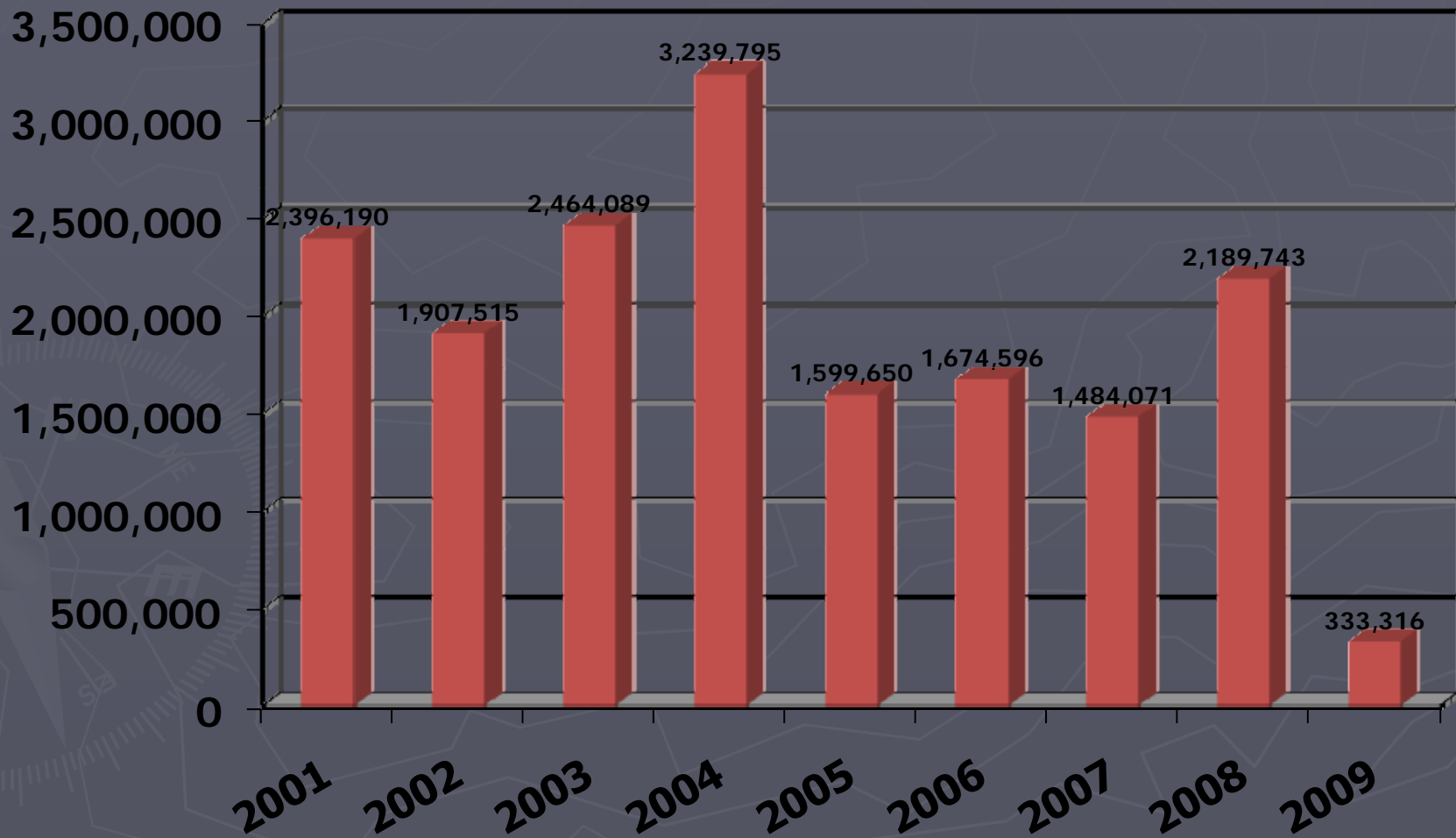
\* Estimated

# 10-Year History of Past Tax Extension Amounts (All Funds)

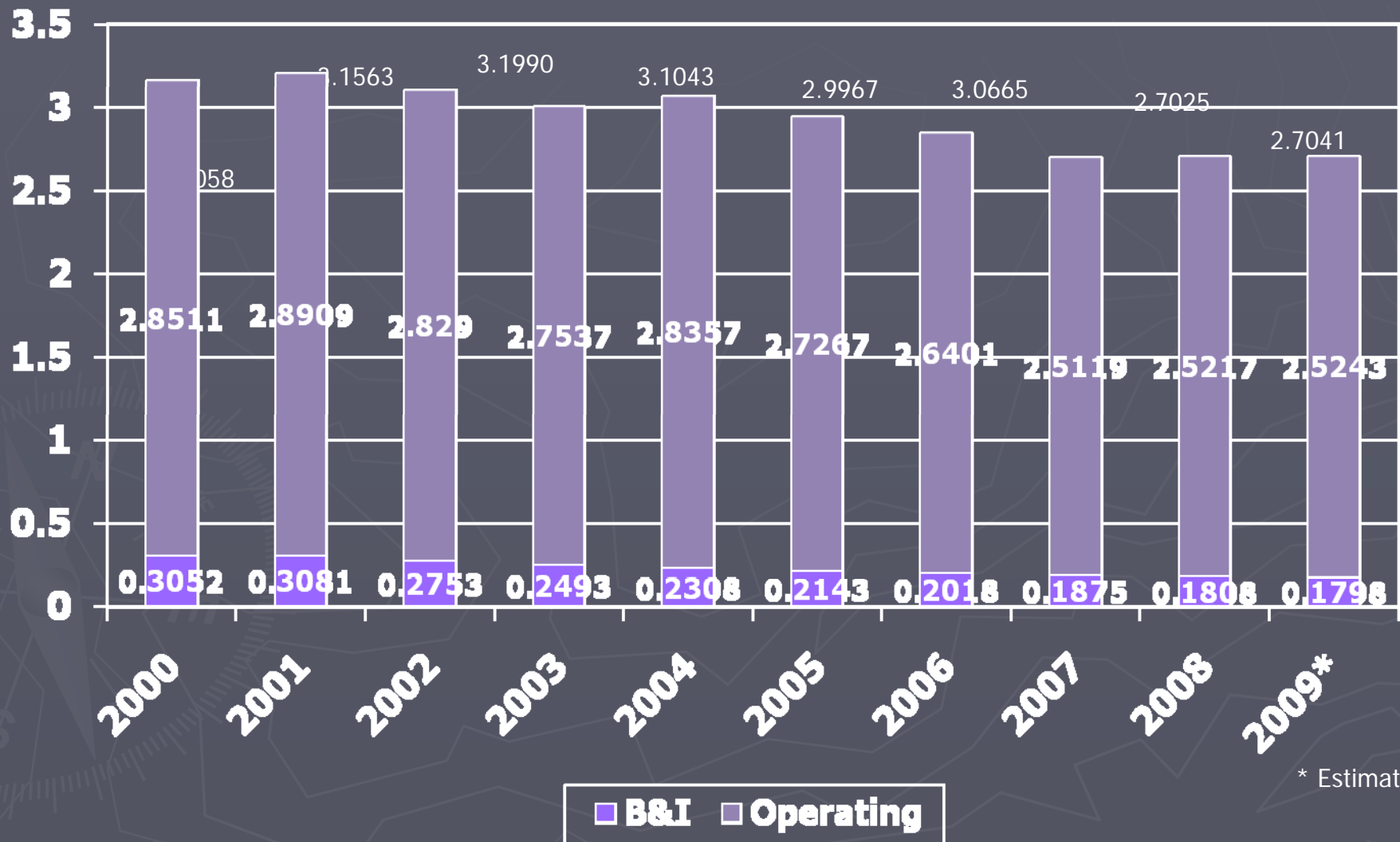


\* Estimated

# History of Levy Extension Growth



# 10-Year Tax Rate History



# 2009 Tentative Levy

Education Fund	\$32,300,000
Operation & Maintenance Fund	\$3,000,000
Transportation Fund	\$800,000
Life Safety Fund	\$0
IMRF	\$512,500
Social Security	\$512,500
Special Education	\$296,000
Working Cash	\$1,446
Tort Immunity	\$1,446
Bond & Interest	\$2,619,500
<b>Total Levy</b>	<b>\$40,043,392</b>

# Next Steps

- ▶ Notice of Proposed Tax Increase will be posted in the Liberty Suburban Chicago Newspaper
- ▶ The Board establishes the date of the Public Hearing on the Proposed Tax Increase as December 7, 2009, 7:15 PM
- ▶ Proposed Tax Increase is on display at CSO until the adoption in December